

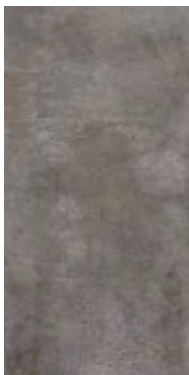
CEMENT 2.0 SERIES



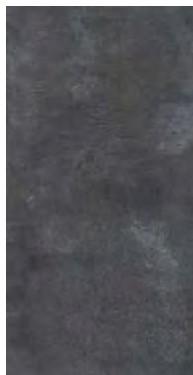
Cement 2.0 SERIES



silver



gris



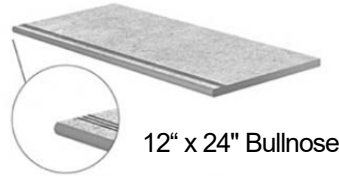
charcoal

Stocked Size
12"x24" Mat Bullnose
24"x24" Mat

CEMENT 2.0 SERIES

*All sizes are rectified, coloured body porcelain tiles

**Sizes available



12" x 24" Bullnose



24" x 24"

	300mmx600mmx20mm 12"x24" Mat	600mmx600mmx20mm 24"x24" Mat
Silver	CX-CMT1A2N	CX-CMT1B2
Gris	CX-CMT2A2N	CX-CMT2B2
Charcoal	CX-CMT3A2N	CX-CMT3B2
Packaging/box	4 pcs	2 pcs
Weight/box	34kg	33kg

Applications of 2 cm Thick Tiles

- Court yards
- Garages
- Gardens
- Paths
- Outdoor stairs
- Outdoor public areas
- Swimming pool surrounds
- Verandas

*** Picture of CEMENT 2.0 silver 24"x24" Matt on the floor.



WaterAbsorbtion% ISO 10545-3	BreakingStrength ISO 10545-4	Abrasion Resistance ISO 10545-7	Slip Resistance	FrostResistance ISO 10545-12	Country of Origin	CrazingResistance ISO 10545-11
≤0.5	≥1300N	Class 3	Mat=R11	Resistant	China	Resistant
Numberof Faces	Thickness	Rectified Tile	Resistanceto Staining ISO 10545-14	Surface Application	Application	Environment
12" x 24" - 24 24" x 24" - 12	20mm	Yes	Class 5	Walls Floors	Indoor Outdoor	Residential Light Commercial

All images are for reference only and may not match physical product exactly. All sizing is nominal and all product specifications are supplied by the manufacturer and are subject to change by the manufacturer without notice to you or to Ceramex Tile & Stone. Ceramex makes no representations or warranties as to the specifications of any product. Shading and variation is inherent in ceramics and natural stone. Please inspect before installing, no claims accepted after installation. Prices are subject to change without notice; please contact your Ceramex Sales Representative for current prices.