

CEMENT 2.0 SERIES

12" x 24" Matte Bullnose
24" x 24" Matte



2CM Thick Tiles Benefits

OUTDOOR APPLICATION

CEMENT 2.0 Invite the right amount sunlight into your space-with soft gleam of ample reflection bouncing off. Cement 2.0 Collection's neutral palette, allowing your courtyard space to feel breezy and airy.

 <p>EASY TO INSTALL</p>	 <p>RESISTANT TO BREAKING LOADS</p>	 <p>UNAFFECTED BY THE PASSING OF TIME</p>
 <p>RESISTANT TO THERMAL SHOCK</p>	 <p>SUPERIOR NON SLIP PERFORMANCE</p>	 <p>EASY TO CLEAN</p>
 <p>PERFECT INDOOR/OUTDOOR COORDINATION</p>	 <p>REMOVABLE FOR EASE OF INSPECTION</p>	 <p>CAN BE REUSED</p>
 <p>FROST PROOF AND FIREPROOF</p>	 <p>NOT AFFECTED BY ACIDS</p>	 <p>ECO FRIENDLY</p>





CEMENT 2.0 SILVER

COLLECTION

silver
gris
charcoal

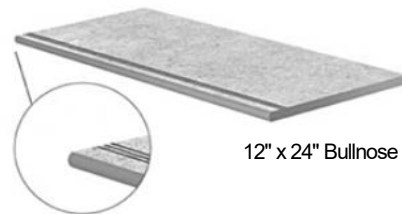
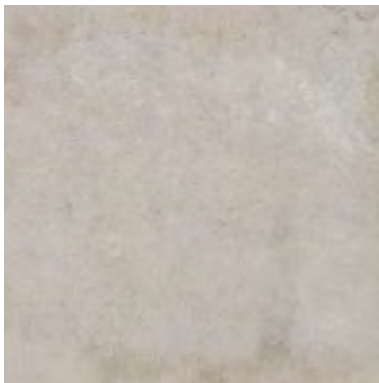
◀ **VISUALIZATIONS**

CEMENT 2.0 SILVER

12"x24" bullnose | 24"x 24"



surface • matte
format • 60 X 60 X 2cm / 24" X 24"
randomness • 12 faces



Applications of 2 cm Thick Tiles

- Court yards
- Garages
- Gardens
- Paths
- Outdoor stairs
- Outdoor public areas
- Swimming pool surrounds
- Verandas

wall tile floor tile frost resistant rectified porcelain tile matt surface



CEMENT 2.0 GRIS

COLLECTION

silver
gris
charcoal

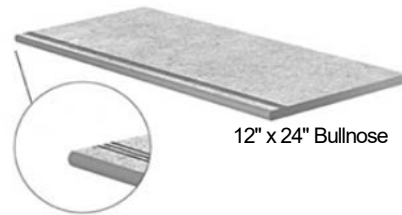
◀ VISUALIZATIONS

CEMENT 2.0 GRIS

12"x24" bullnose | 24"x 24"



surface • matte
format • 60 X 60 X 2cm / 24" X 24"
randomness • 12 faces



Applications of 2 cm Thick Tiles

- Court yards
- Garages
- Gardens
- Paths
- Outdoor stairs
- Outdoor public areas
- Swimming pool surrounds
- Verandas

wall tile floor tile frost resistant rectified porcelain tile matt surface



CEMENT 2.0 CHARCOAL

COLLECTION

silver
gris
charcoal

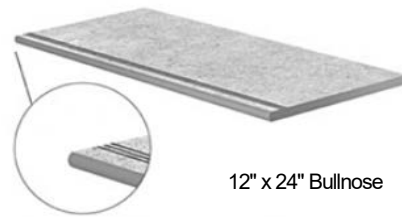
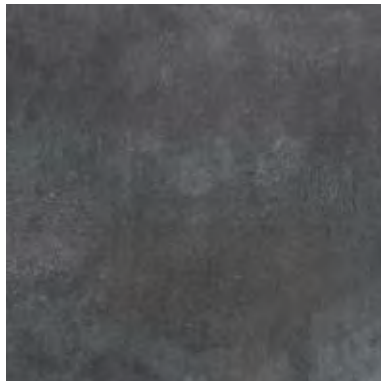
◀ VISUALIZATIONS

CEMENT 2.0 CHARCOAL

12"x24" bullnose | 24"x 24"



surface • matte
format • 60 X 60 X 2cm / 24" X 24"
randomness • 12 faces



12" x 24" Bullnose

Applications of 2 cm Thick Tiles

- Court yards
- Garages
- Gardens
- Paths
- Outdoor stairs
- Outdoor public areas
- Swimming pool surrounds
- Verandas

wall tile floor tile frost resistant rectified porcelain tile matt surface



Ceramex
TILE & STONE

Ceramex Enterprises Inc.
Office: 105-86 North Bend St.
Coquitlam, BC V3K 6H1

Showroom: 33286 S Fraser Way #1,
Abbotsford, BC V2S 2B4

Contact: 604-449-2299
email: info@ceramex.ca
Website: www.ceramex.ca