

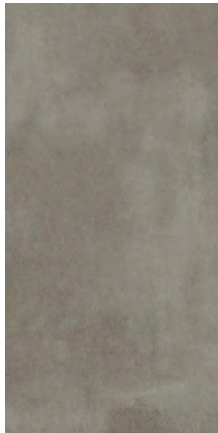
TOWN 2.0 SERIES



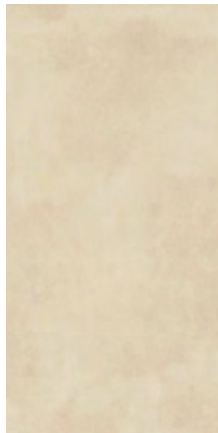
TOWN 2.0 Porcelain Series



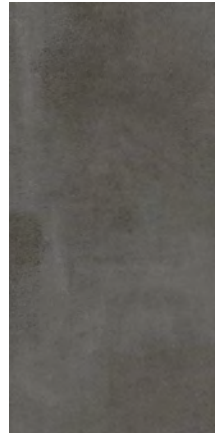
soft grey



grey



beige



antracite

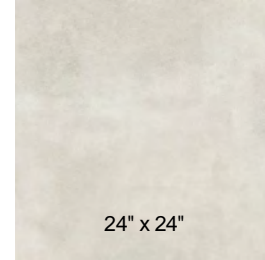
Stocked Size

24"x24" Matt 2CM

TOWN 2.0 SERIES

*All sizes are rectified, glazed porcelain tiles

**Sizes available



	600x600x20mm 24" x 24" Matt
Soft Grey	CX-TWN1B2P
Grey	CX-TWN2B2P
Beige	CX-TWN3B2P
Antracite	CX-TWN4B2P
Packaging/box	2 pcs
Weight/box	31kg

Applications of 2 cm Thick Tiles

- Court yards
- Garages
- Gardens
- Paths
- Outdoor stairs
- Outdoor public areas
- Swimming pool surrounds
- Verandas

*** Picture of Town Grey
24" x 24" Matte on the floor



Water Absorbtion % ISO 10545-3	Breaking Strength ISO 10545-4	Abrasion Resistance ISO 10545-7	Slip Resistance	Frost Resistance ISO 10545-12	Country of Origin	Crazing Resistance ISO 10545-11
≤0.5	8500N	Class 4	DCOF 0.73	Resistant	Poland	Resistant
Number of Faces	Thickness	Rectified Tile	Resistanceto Staining ISO 10545-14	Surface Application	Application	Environment
24"x24" - 9	20mm	Yes	Class 5	Walls Floors	Indoor Outdoor	Residential Light Commercial

All images are for reference only and may not match physical product exactly. All sizing is nominal, and all product specifications are supplied by the manufacturer and are subject to change by the manufacturer without notice to you or to Ceramex Tile & Stone. Ceramex makes no representations or warranties as to the specifications of any product. Shading and variation is inherent in ceramics and natural stone. Please inspect before installing, no claims accepted after installation. Prices are subject to change without notice; please contact your Ceramex Sales Representative for current prices.